

Pick Up The Pieces

Tenor solo / Alto solo

Average White Band
Arr. Ferdi Schukking

Average White Band Horns ① ②

4 14 21 20

Detailed description: This block shows the beginning of the piece for the Average White Band and Horns. It consists of a single musical staff in 4/4 time with a key signature of two flats. The staff is divided into four measures by double bar lines. Above the staff, the instrument names 'Average White Band' and 'Horns' are written. Above the first measure is the number '4', above the second is '14', above the third is '21', and above the fourth is '20'. There are two circled numbers, '1' and '2', positioned above the staff between the second and third measures, and between the third and fourth measures respectively.

Tenor solo Malcolm 'Molly' Duncan

60 C7

63

66

68 8^{va}

72 G-7 loco

Detailed description: This block contains the tenor solo for Malcolm 'Molly' Duncan, spanning measures 60 to 72. It is written on a single musical staff in 4/4 time with a key signature of two flats. Measure 60 starts with a C7 chord symbol. The solo features various musical notations including slurs, accents, and dynamic markings. Measure 68 includes an 8^{va} (octave) marking. Measure 72 includes a G-7 chord symbol and a 'loco' marking. The staff ends with a double bar line and a key signature change to one flat.

Pick Up The Pieces - Tenor solo / Alto solo

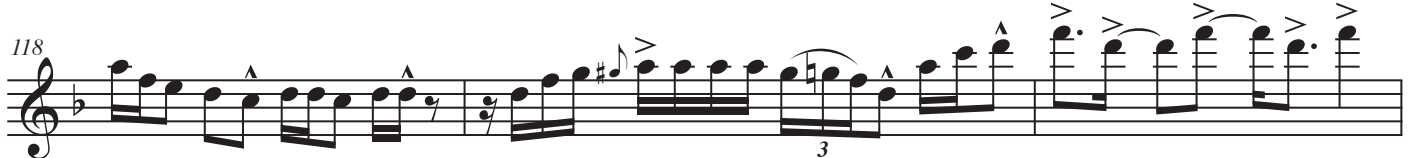
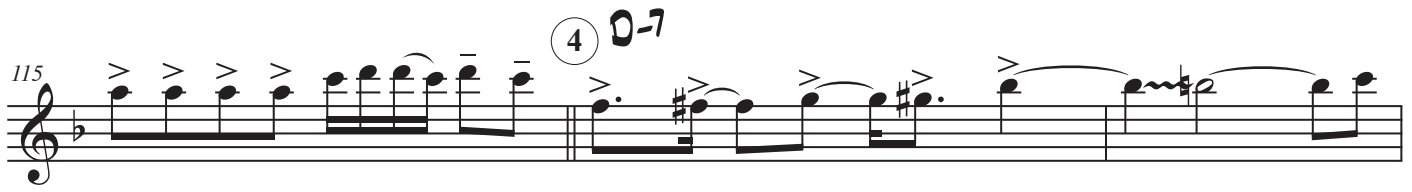
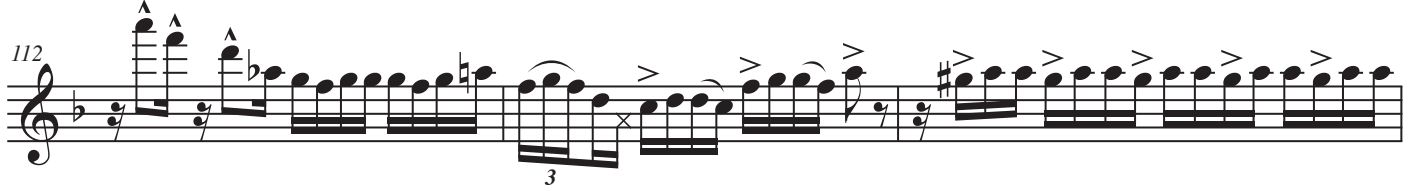
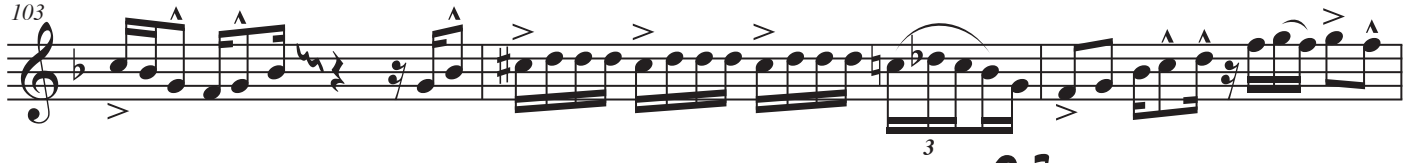
Candy Dulfer 1:16

76

24



Alto solo Candy Dulfer



Pick Up The Pieces - Tenor solo / Alto solo

5 **D-7**



127



130



6 **D-7**



136



D-7

141



144



148



152

